



## Dflow kit for harvesters balers and forage wagons.

Control box with digital back lit display.

Easy to set-up and use.

Digital flow sensor.

Covered pump module with bracket that has multiple mounting options.

Can be mounted to any size tank of your choice in your area.

Thru beam crop detection compatible.

Three flow rate options

Dflow UV 0.10 to 1.0 l/min (3.4 to 34.0 oz/min)

Dflow LV 0.50 to 5.0 l/min (17.0 to 169.0 oz/min)

Dflow HV 1.00 to 10.0 l/min (34.0 TO 338.8 oz/min)



### Digital Control

The control box automatically monitors and adjusts the flow from the pump to keep it's output constant, this enables the pump to deliver additive precisely at any harvesting rate within the models range. It has a digital back lit display with memory to record the total litres dispensed.

## Simple operation

### Settings for baler

Set you bale weight in Kg per Bale

Enter the application rate of your additive in litres per tonne.

Set how many bales made in an hour



### Settings for harvester or wagon

Enter the application rate of your additive in litres per tonne.

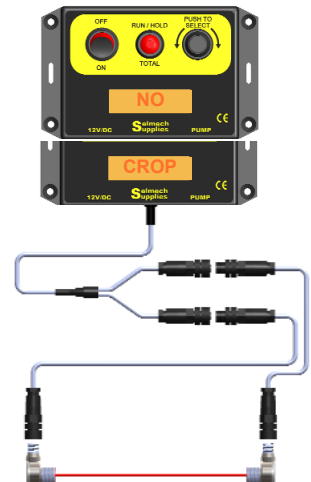
Set how many tonnes an hour are picked up



The total litres dispensed are stored in memory and can be zeroed.



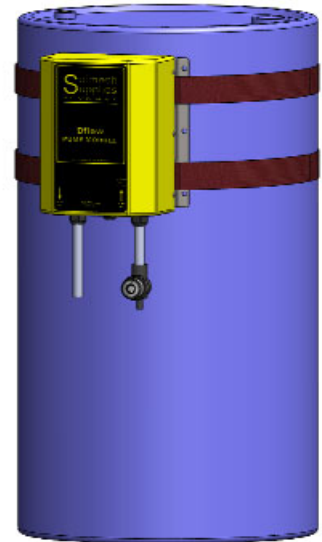
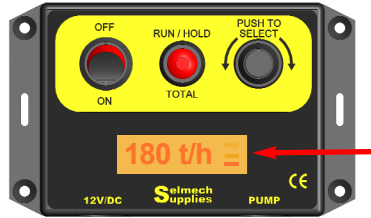
A thru-beam crop sensor can be used with the Selmech control box to automatically turn the pump on and off.



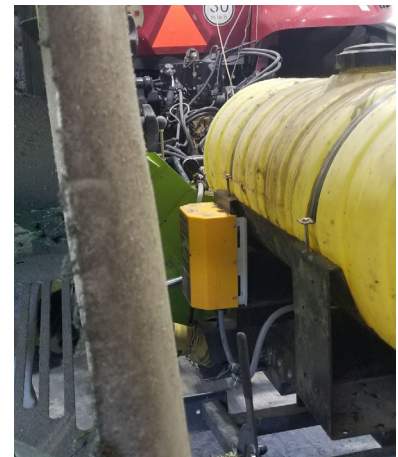
## Control box features

RUN / HOLD button to stop and start the pump manually.

Scrolling bars at the end of the display showing that the applicator is achieving its target rate.



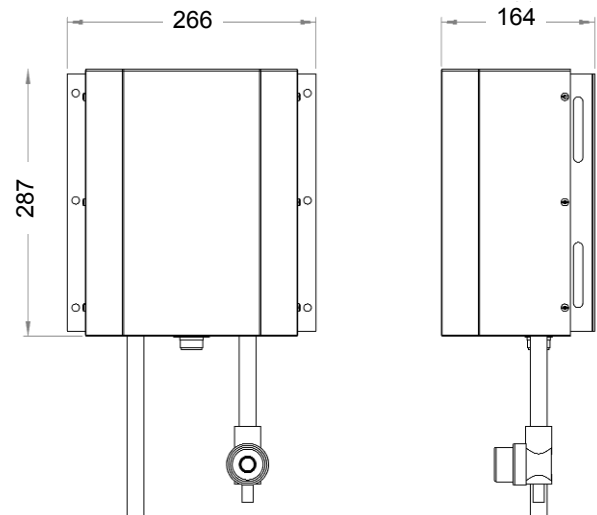
The Dflow pump module kit can be mounted to any size tank of your choice in your area.



## Technical data

|                             |  |
|-----------------------------|--|
| Supply Voltage              | 12V/DC (10.6V DC to 16.4V/DC)  |
| Current consumption         | LV 5A, HV 10A  |
| Fuse rating                 | LV 10A, HV 15A   |
| Output signal to pump       | PWM approx 1.4 KHz   |
| Dimensions of tank assembly | 470mm W x 385mm D x 630mm H  |
| Pump output range           | LV 0.50 to 5.0 l/min, (17.0 to 169.0 oz/min)<br>HV 1.0 to 10.0 l/min, (34.0 to 338.8 oz/min) |

## Overall Dimensions



## Dealer Info