

The thru beam crop detector kit is designed to be used in conjunction with a Selmech Supplies in cab digital controller. It will automatically turn the applicator on when crop is detected by breaking the beam at the point of pick-up. When there is no crop the applicator will be turned off.

When there is no crop being detected the control box display will say NO CROP.



Dflow plus controller
Not included as part of the kit



4 pin connector
to centre socket
of control box

total cable length
10 metres - (32ft)

cable 5 metres -
(16ft) long

Crop Detector split lead

Connecting leads x 2
Sensor to controller

cable 5 metres - (16ft) long

Green Indicator
ON = Power on
OFF = Power off

Green Indicator
ON = Power on
OFF = Power off

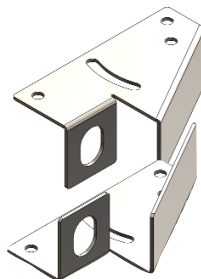


Orange Indicator
ON = Beam is broken or not aligned
OFF = Beam is detected

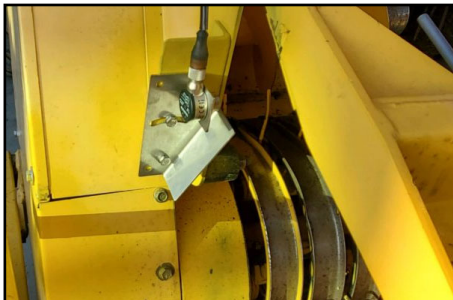
Sensor receiver

Detection beam

Sensor emitter



Sensor mounting
bracket pair



Mounting and mounting position of the sensors will vary depending on make and model of the baler.

In some cases an adaptor bracket may need to be fabricated by the end user.

